

HR705

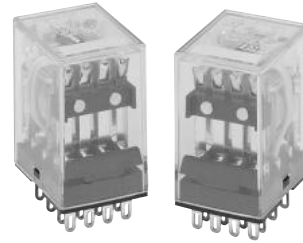
Multi contact 범용 Relay

특징

- 다양한 적용 범위와 옵션 가능
- Arc barrier 설치 (4pole type)
- 다양한 안전기준에 따름

용도

- FA기기, 자동화기기
- 제어반, 공작기계, 전원장치, 성형기, 용접기, 농업용기기
- 업무용기기, 자판기, 통신기기, 방재기기, 복사기, 계측기, 의료기
- 각종 전기 기기 등



인증사항

UL CUL

TUV

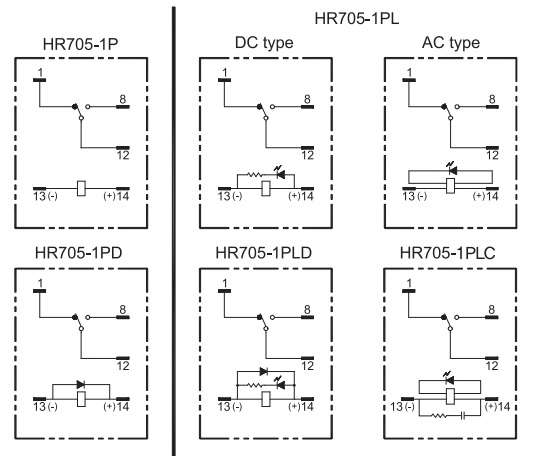
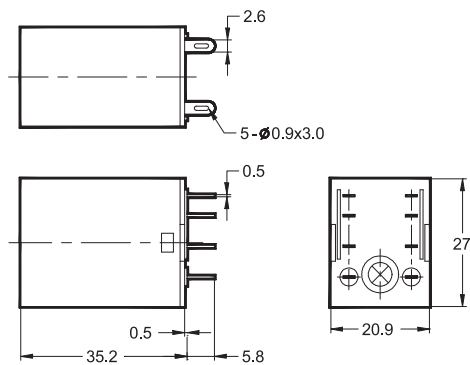
CE

외형치수(mm) 및 회로도

인치로 바꾸기 위해서는 0.03937를 곱하십시오.

HR705-1P and variations

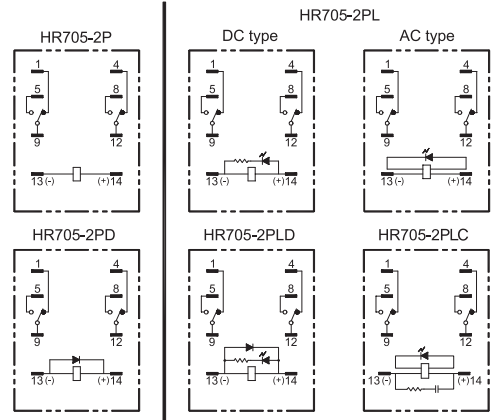
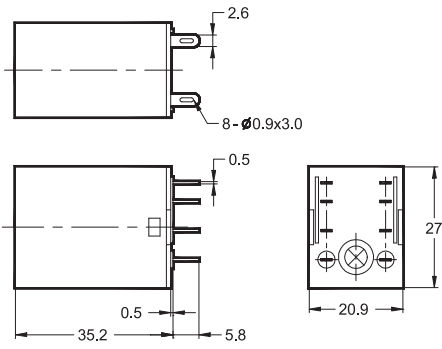
Bottom View



HR705

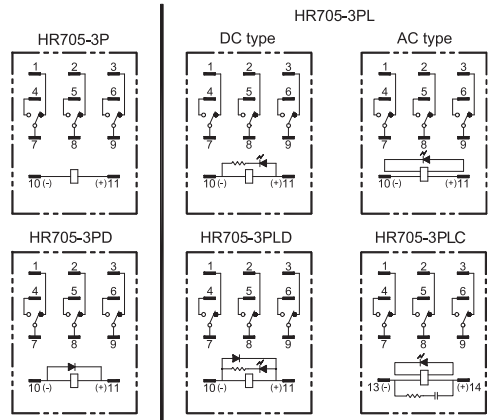
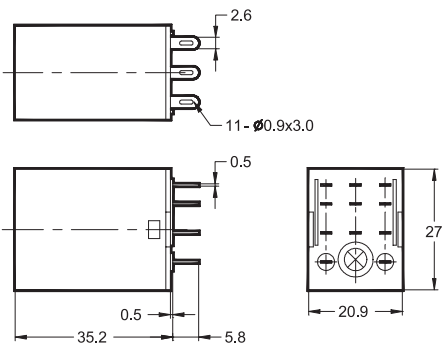
HR705-2P

Bottom View



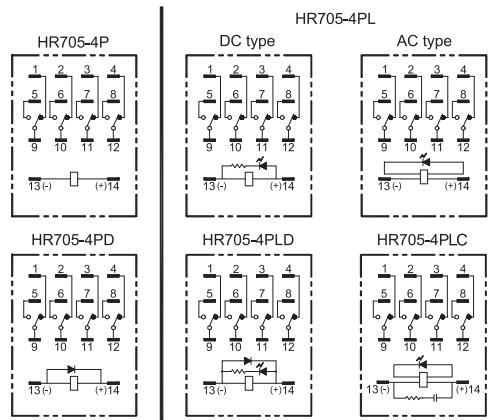
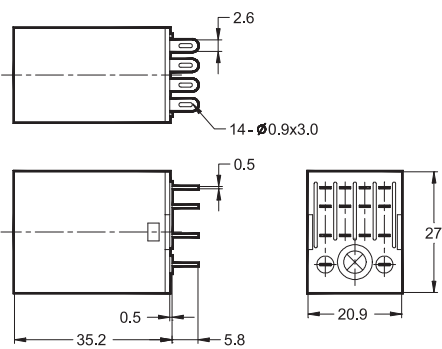
HR705-3P and variations

Bottom View



HR705-4P

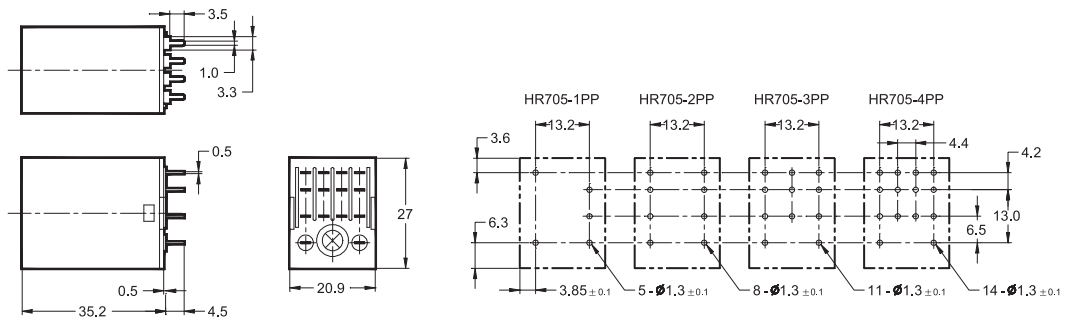
Bottom View



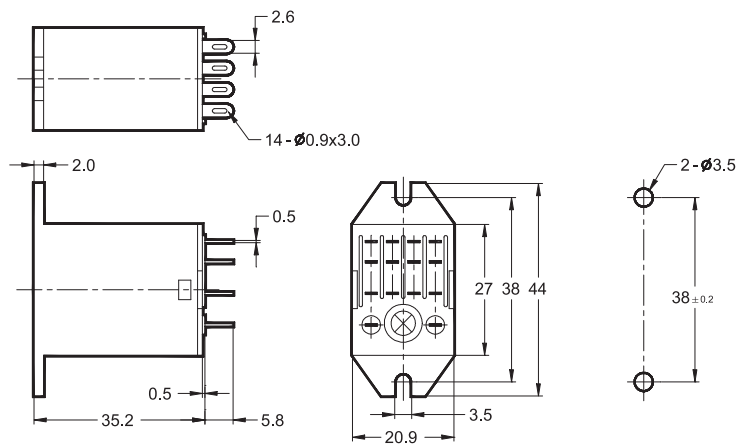
GENERAL PURPOSE RELAY

HR705

HR705-1PP, HR705-2PP, HR705-3PP, HR705-4PP



HR705-1PB, HR705-2PB, HR705-3PB, HR705-4PB



HR705

접점부

접점구성	2 Form C (DPDT), 3 Form C (3PDT)	4 Form C (4PDT)
접점재질	Ag Alloy	AgCdO
초기접촉저항	50mΩ max.	50mΩ max.
정격전류 (저항부하)	5A 24VDC 5A 240VAC	3A 24VDC 3A 240VAC
최대통전전류	5A	3A
최대개폐용량	DC voltage : 120W AC voltage : 1,200VA	72W 720VA
최대개폐전압	30VDC 250VAC	
최소 스위칭 정격 ¹⁾	100mA 5VDC	

¹⁾ 최소 스위칭 정격은 부하가 매우 미세한 전류를 소비하는 경우, 설계시 여러 관점에서 트러블 슈팅을 고려하여야 합니다. 즉, 좀더 신뢰적인 시퀀스를 위해 부하 양단(병렬)에 적절한 더미저항을 추가하여 명시된 최소 스위칭 정격 이상의 전류가 흐르게 설계되어야 합니다.

안전인증규격

UL/CUL : E168231	CE : M,2021,206,C63954	TUV : R 50288612
------------------	------------------------	------------------

코일부

전압사양		12VDC ~ 110VDC, 12VAC ~ 240VAC
소비전력 ²⁾	DC coil : AC coil :	약 0.9W 약 0.9VA ~ 1.2VA (60Hz)
동작전압 ³⁾		정격전압의 80% 이하
차단전압 ⁴⁾	DC coil : AC coil :	정격전압의 10% 이상 정격전압의 30% 이상

²⁾, ³⁾, ⁴⁾ 값들은 Part selection을 참고 하십시오.

일반사양

동작시간		정격전압에서 최대 20ms
차단시간		정격전압에서 최대 20ms
절연저항		100MΩ min. (500VDC)
내전압	접점간 : 접점과 코일간 :	1분간 1,000VACrms 1분간 1,500VACrms
수명	기계적 : 전기적 :	1,000,000회 이상 정격부하에서 100,000회 이상
내진동	기능적 : 파괴적 :	10~55Hz(진동폭 : 1.5mm) 10~55Hz(진동폭 : 1.5mm)
충격	기능적 : 파괴적 :	10G min. 100G min.
사용주위온도		- 35℃ ~ +55℃(무결빙)
사용주위습도		35% ~ 80% RH
무게		약 33g

주의 : 위 수치는 초기값입니다.

HR705

형명구분



HR705-□□□□

Contact arrangement

1P: 1 Form C
2P: 2 Form C
3P: 3 Form C
4P: 4 Form C

Mounting & Terminal

None: Socket – plug-in, solder
P: PC Board – pin
B: Flange – plug-in, solder

Options

None: Standard
L: LED indicator (DC coil: green, AC coil: red)
T: Test button
LT: LED indicator + Test button
D: freewheeling diode
LD: LED indicator + freewheeling diode
LC: LED indicator + Built-in the Surge Absorbent Circuit

Coil voltage

12VDC	12VAC	100/110VAC
24VDC	24VAC	110/120VAC
48VDC	50VAC	200/220VAC
100/110VDC		220/240VAC

1. 품명에 대한 설명은 참고사항입니다. 품명은 독단적으로 구성될 수 없습니다.
2. 제품 사양 및 재질은 품질 향상을 위하여 예고없이 변경될 수 있습니다.
3. 아래 표에 기술된 품명을 참고하십시오.

Part selection

품명	정격전압 (VDC)	코일저항 (Ω ± 10%)	정격전류 (mA)		동작전압 (VDC)	차단전압 (VDC)	최대전압 (VDC)	정격전력 (mW)
			50Hz	60Hz				
DC Coil								
HR705-□□□□ 12VDC	12	160	75		80%이하	10%이상	110%	0.9 approx.
HR705-□□□□ 24VDC	24	650	36.9					
HR705-□□□□ 48VDC	48	2,600	18.5					
HR705-□□□□ 100/110VDC	100/110	11,000	9.1/10					1.1 approx.
AC Coil								
HR705-□□□□ 12VAC	12	46	106.5	91	80%이하	30%이상	110%	1.0 to 1.2 (60Hz) approx.
HR705-□□□□ 24VAC	24	180	53.8	46				
HR705-□□□□ 50VAC	50	788	25.7	22				
HR705-□□□□ 100/110VAC	100/110	3,750	11.7/12.9	10/11				0.9 to 1.2 (60Hz) approx.
HR705-□□□□ 110/120VAC	110/120	4,430	9.9/10.8	8.4/9.2				
HR705-□□□□ 200/220VAC	200/220	12,950	6.2/6.8	5.3/5.8				
HR705-□□□□ 220/240VAC	220/240	18,790	4.8/5.3	4.2/4.6				

주의 : 위의 모든 값들은 23°C에서 측정되었습니다.

HR705

소켓

1,2pole



KYF08A



KYF08AE



KMY2

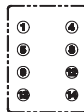
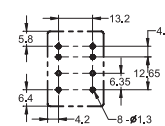
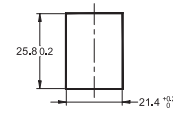
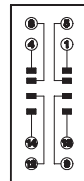
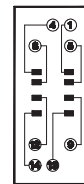
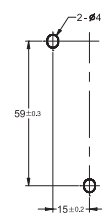
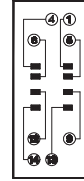
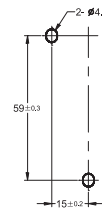
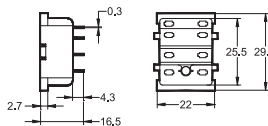
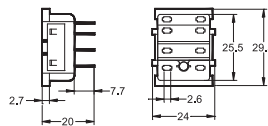
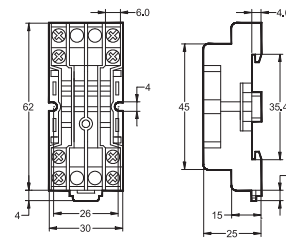
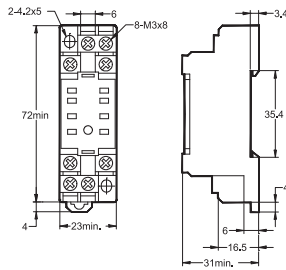
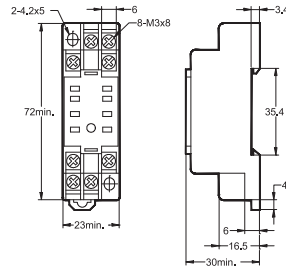


KY08



KY08-02

외형치수(mm)



*Finger-sate version of KYF08A (IP-2X)

GENERAL PURPOSE RELAY

HR705

소켓

3pole

외형치수(mm)



KYF11A



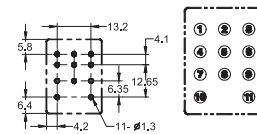
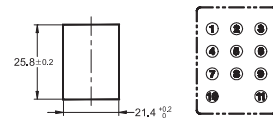
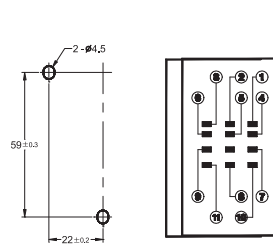
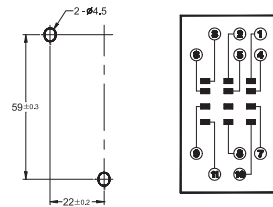
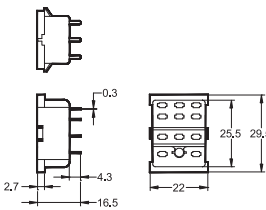
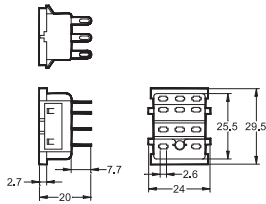
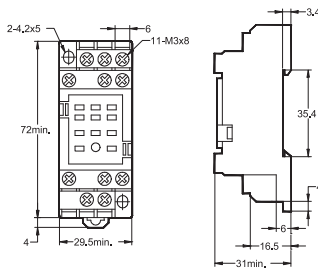
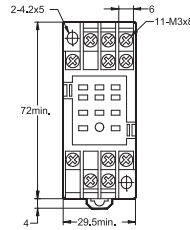
KYF11AE



KY11



KY11-02



HR705

소켓

4pole



KYF14A



KYF14AE



KMY4

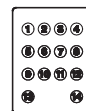
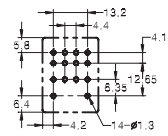
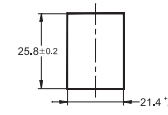
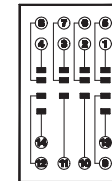
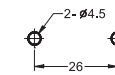
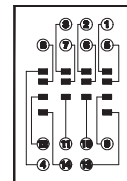
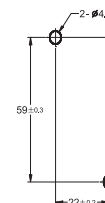
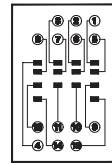
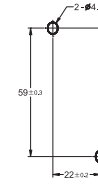
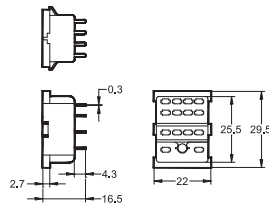
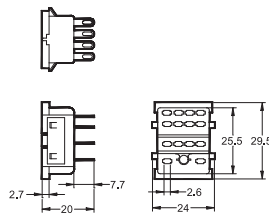
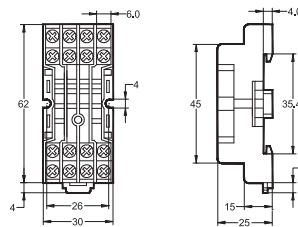
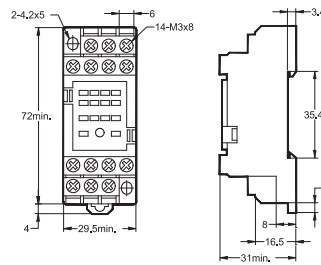
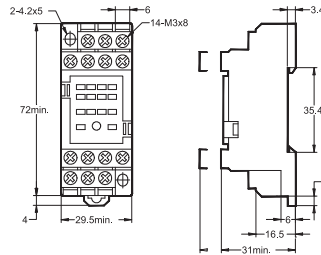


KY14



KY14-02

외형치수(mm)



GENERAL PURPOSE RELAY