

# HR105

## Multi contact 범용 Relay

### 특징

- 다양한 적용 범위와 옵션기능
- Arc barrier 설치 (4pole type)
- 다양한 안전기준에 따름

### 용도

- FA기기, 자동화기기
- 제어반, 공작기계, 전원장치, 성형기, 용접기, 농업용기기
- 업무용기기, 자판기, 통신기기, 방재기기, 복사기, 계측기, 의료기
- 각종 전기 기기 등



인증사항

UL CUL

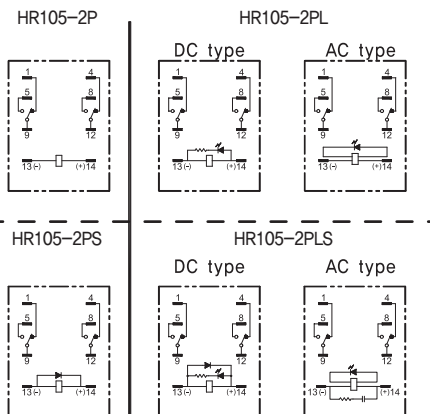
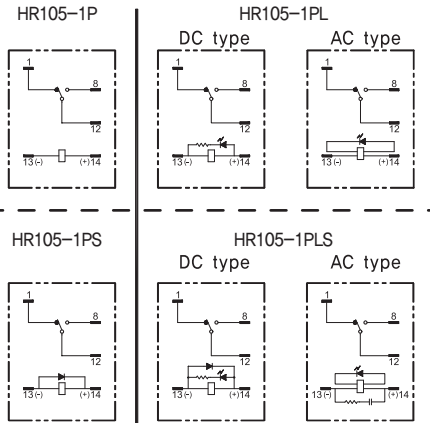
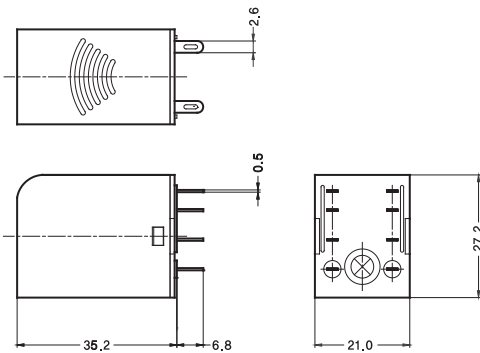
CE

### 외형치수(mm) 및 회로도

인치로 바꾸기 위해서는 0.03937를 곱하십시오.

#### HR105-1P / 2P

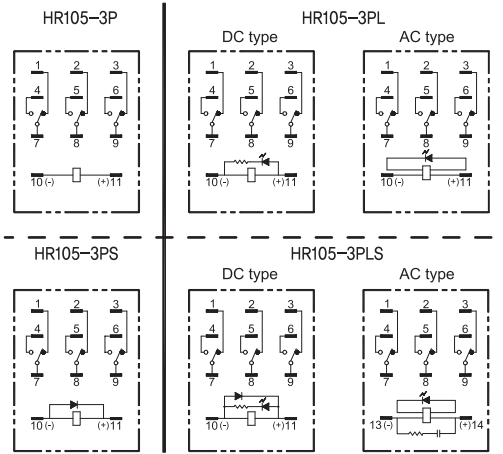
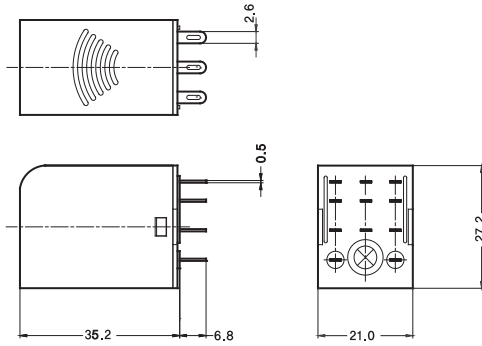
Bottom View



# HR105

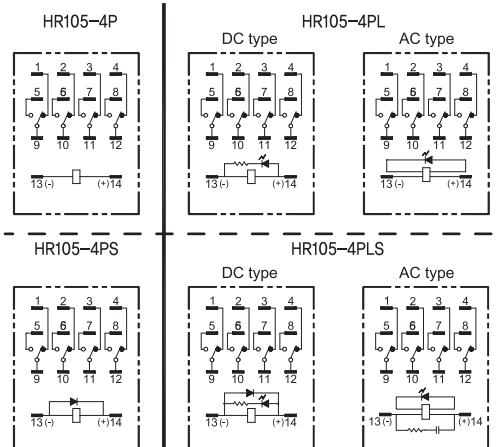
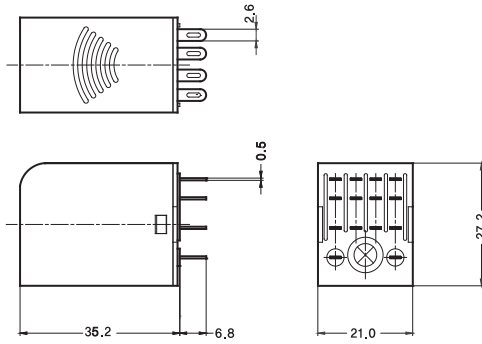
## HR105-3P

Bottom View



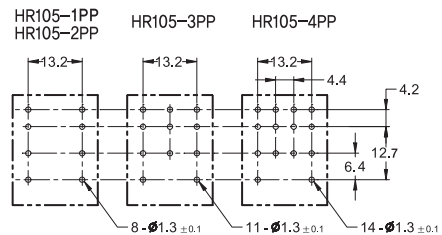
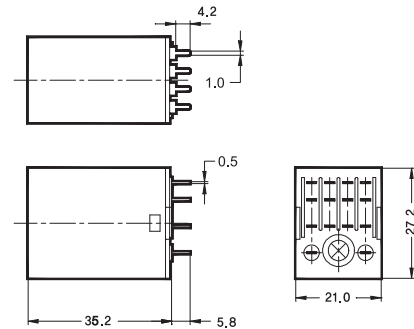
## HR105-4P

Bottom View



## HR105-1PP/2PP, HR105-3PP, HR105-4PP

Bottom View



GENERAL PURPOSE RELAY

# HR105

## 접점부

접점구성	1 Form C (SPDT), 2 Form C (DPDT), 3 Form C (3PDT)	4 Form C (4PDT)
접점재질	Ag Alloy + Cu	Ag Alloy + Cu
초기접촉저항	100mΩ max.	100mΩ max.
정격전류(저항부하)	6.5A 28VDC 6.5A 240VAC	5A 28VDC 5A 240VAC
최대통전전류	6.5A	5A
최대개폐용량	DC voltage : 182W AC voltage : 1,560VA	140W 1,200VA
최대개폐전압	28VDC 250VAC	
최소 스위칭 정격 <sup>1)</sup>	100mA 5VDC	

<sup>1)</sup>최소 스위칭 정격은 부하가 매우 미세한 전류를 소비하는 경우, 설계시 여러 관점에서 트러블 슈팅을 고려하여야 합니다. 즉, 좀더 신뢰적인 시퀀스를 위해 부하 양단(병렬)에 적절한 더미저항을 추가하여 명시된 최소 스위칭 정격 이상의 전류가 흐르게 설계되어야 합니다.

## 안전인증규격

UL/CUL : E489009	CE : CPC16/042434
------------------	-------------------

## 코일부

전압사양	12VDC~110VDC, 12VAC~220VAC
소비전력 <sup>2)</sup>	DC coil : 약 0.9W AC coil : 약 0.9VA to 1.2VA (60Hz)
동작전압 <sup>3)</sup>	정격전압의 80% 이하
차단전압 <sup>4)</sup>	DC coil : 정격전압의 10% 이상 AC coil : 정격전압의 30% 이상

<sup>2), 3), 4)</sup> 값들은 Part selection을 참고 하십시오.

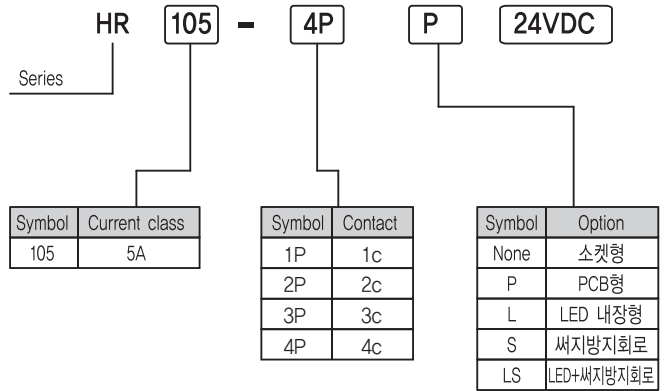
## 일반사양

동작시간	정격전압에서 최대 15ms
차단시간	정격전압에서 최대 10ms
절연저항	100MΩ min. (500VDC)
내전압	접점간 : 1분간 1,000VACrms 접점과 코일간 : 1분간 1,500VACrms
수명	기계적 : 1,000,000회 이상 전기적 : 정격부하에서 100,000회 이상
내진동	기능적 : 10~55Hz(진동폭 : 1.0mm) 파괴적 : 10~55Hz(진동폭 : 1.0mm)
충격	기능적 : 10G min. 파괴적 : 100G min.
사용주위온도	-25°C ~ +55°C(무결빙)
사용주위습도	35% ~ 80% RH
무게	약 35g

주의 : 위 수치는 초기값입니다.

# HR105

## 형명구분



품명에 대한 설명은 참고사항입니다. 품명은 독단적으로 구성될 수 없습니다. 아래 표에 기술된 품명을 참고하십시오.

### Part selection

품명	정격전압 (VDC)	코일저항 ( $\Omega \pm 10\%$ )		동작전압 (VDC)	차단전압 (VDC)	최대전압 (VDC)	정격전력 (mW)
		50Hz	60Hz				
<b>DC Coil</b>							
HR105-□□□ 12VDC	12	160		75%이하	10%이상	110%	0.9 approx.
HR105-□□□ 24VDC	24	640					
HR105-□□□ 48VDC	48	2,560					
HR105-□□□ 100/110 VDC	100/110	13,444					
<b>AC Coil</b>							
HR105-□□□ 12VAC	12	42	40	80%이하	30%이상	110%	0.9 to 1.2 (60Hz) approx.
HR105-□□□ 24VAC	24	168	161				
HR105-□□□ 48VAC	48	672	643				
HR105-□□□ 100/110 VAC	100/110	3,529	3,378				
HR105-□□□ 220VAC	220	14,117	13,511				
HR105-□□□ 240VAC	240	16,800	16,080				

주의 : 위의 모든 값들은 23°C에서 측정되었습니다.

# HR105

소켓

1,2pole



KMY2



KY08



KY08-02



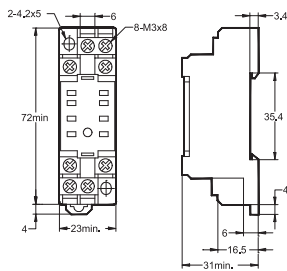
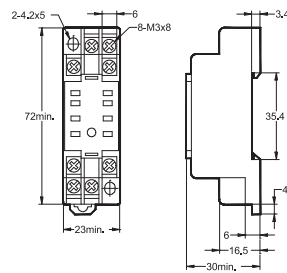
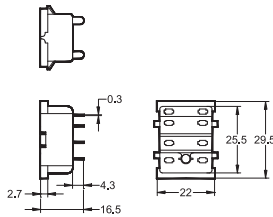
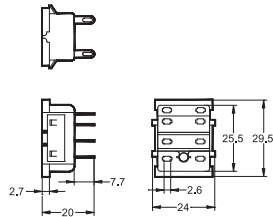
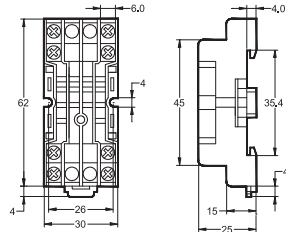
KYF08A



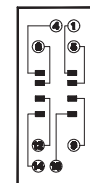
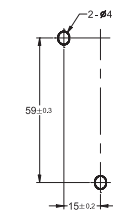
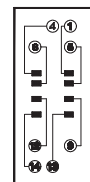
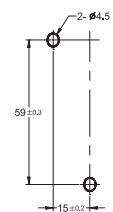
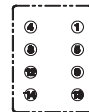
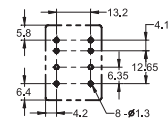
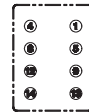
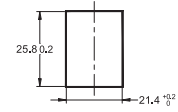
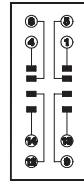
KYF08AE

\*Finger-sate version of KYF08A (IP-2X)

외형치수(mm)



Top View



# HR105

소켓

3pole

외형치수(mm)

Top View



KY11



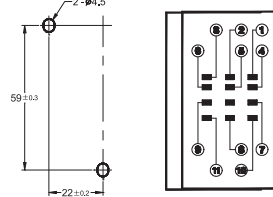
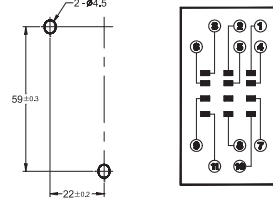
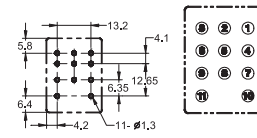
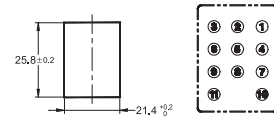
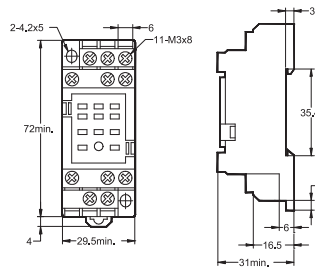
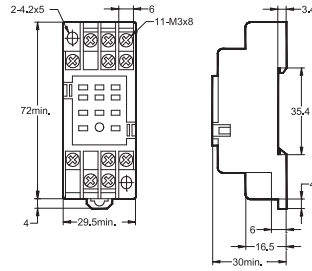
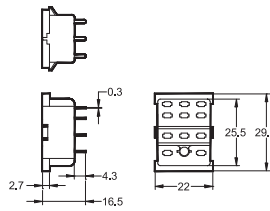
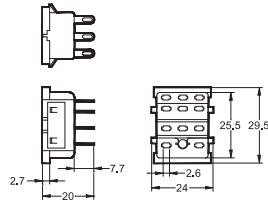
KY11-02



KYF11A



KYF11AE

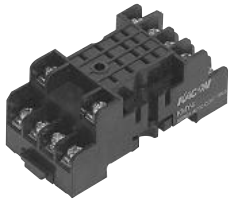


GENERAL PURPOSE RELAY

# HR105

소켓

4pole



KMY4



KY14



KY14-02

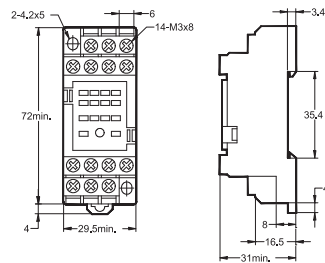
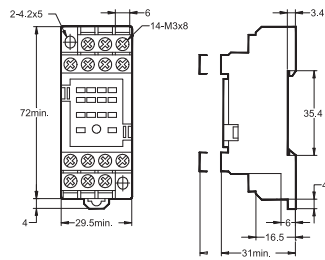
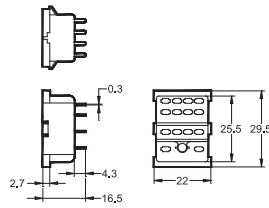
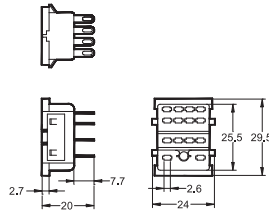
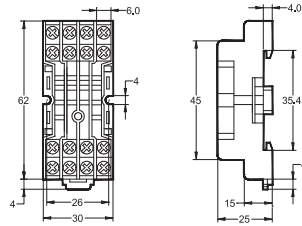


KYF14A



KYF14AE

외형치수(mm)



Top View

